



**Kirkstall Crescent | Walsall | WS3 2SR**

**Asking Price £195,000**





# Summary

**\*\*THREE BEDROOM HOME\*\*FULLY RENOVATED\*\*REFITTED KITCHEN\*\*REFITTED BATHROOM\*\*TWO RECEPTION ROOMS\*\*SEPERATE UTILITY ROOM\*\*DRIVEWAY AND GARDEN\*\*NO ONWARD CHAIN\*\*FINISHED TO A HIGH STANDARD\*\*VIEWING IS ESSENTIAL\*\*REWIER THROUGHOUT\*\***

This stunning, fully renovated three-bedroom terrace home on Kirkstall Crescent offers a perfect blend of modern style and practical living. From the moment you arrive, the block-paved driveway and welcoming entrance porch set the tone for this beautifully presented property. Stepping inside, the hallway leads you through to the heart of the home. At the rear, the main lounge is a standout feature, with a walk-in bay and patio doors that flood the space with natural light while providing seamless access to the low-maintenance block-paved rear garden. Perfect for entertaining or relaxing, this space is complemented by a further dining room that offers additional versatility. The refitted kitchen is a stylish hub, combining sleek design with functionality, and is accompanied by a separate utility room to ensure convenience and practicality. On the first floor, you'll find three generously sized bedrooms, each designed to provide comfort and a sense of calm. The refitted family bathroom is equally impressive, featuring modern fixtures and finishes that elevate the space.

## Key Features

- FULLY RENOVATED
- REFITTED KITCHEN
- SEPERATE UTILITY ROOM
- TWO RECEPTION ROOMS
- GARDEN
- THREE BEDROOM HOME
- REFITTED BATHROOM
- NO ONWARD CHAIN
- DRIVEWAY
- CALL WEBBS ON 01922 663399 TO SECURE YOUR VIEWING TODAY!!!

## Rooms and Dimensions

### Identification Checks B

#### Entrance Hall

#### Lounge/ Dinning Room

10'0" x 8'10" (3.066m x 2.708m)

#### Lounge

13'0" x 15'5" (3.963m x 4.709m)

#### Refitted Kitchen

19'5" x 6'3" (5.921m x 1.917m)

#### Utility Room

### First Floor Landing

#### Bedroom One

12'6" x 10'11" (3.826m x 3.349m)

#### Bedroom Two

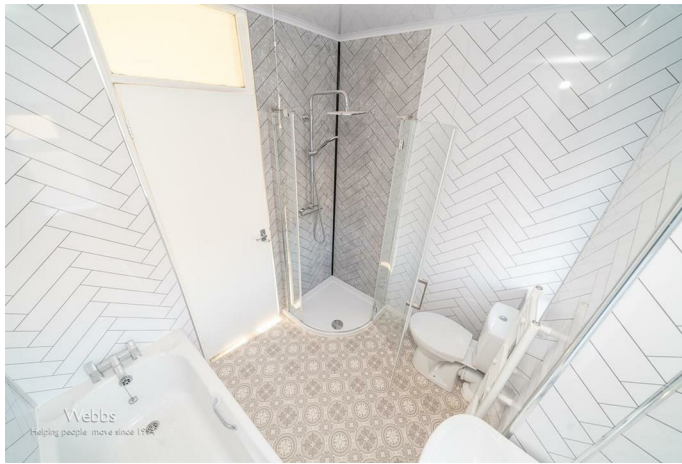
12'7" x 8'4" (3.849m x 2.561m)

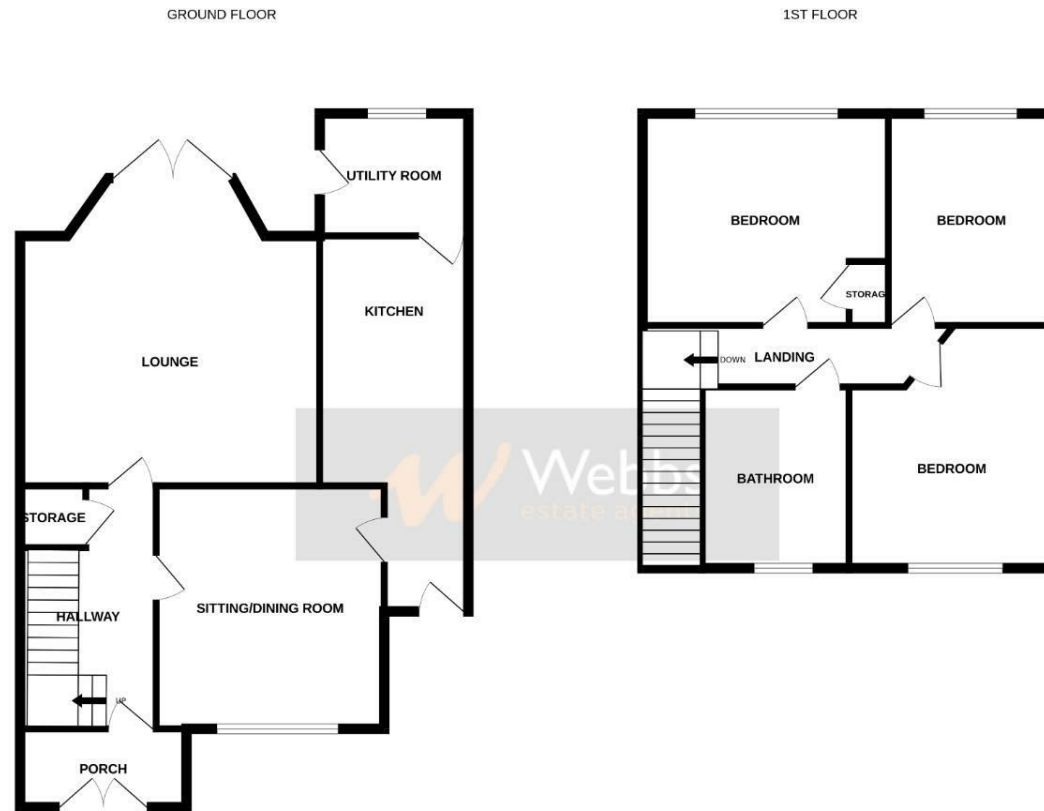
#### Bedroom Three

8'9" x 8'3" (2.680m x 2.538m)

#### Family Bathroom

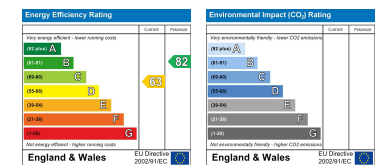






Whilst every attempt has been made to ensure the accuracy of the floorplan contained here, measurements of doors, windows, rooms and any other items are approximate and no responsibility is taken for any error, omission or mis-statement. This plan is for illustrative purposes only and should be used as such by any prospective purchaser. The services, systems and appliances shown have not been tested and no guarantee as to their operability or efficiency can be given.  
Made with Metropix ©2025

Webbs Estate Agents - endeavour to maintain accurate depictions of properties in Virtual Tours, Floor Plans and descriptions, however, these are intended only as a guide and purchasers must satisfy themselves by personal inspection.



212 High Street, Bloxwich, Walsall, WS3 3LA

Tel: 01922 663399 | Email: [bloxwich@webbestateagents.co.uk](mailto:bloxwich@webbestateagents.co.uk) | [www.webbestateagents.co.uk](http://www.webbestateagents.co.uk)

